

華人社會工作教育：創新與啟迪

創新社會工作教學實踐

林靜雯
香港中文大學



Challenges 新挑戰:

Use of new technology for teaching and learning has increased worldwide and is a new pedagogical approach 應用新科技及新興的教學模式於教學與學習，是國際的趨勢

Compared to other disciplines, we are far behind in use of technology

社會工作與其他學科相比，較少應用科技於學習

Resource implications: labour intensive, use of new technologies...

對資源的需求：人力資源、新科技的使用

Student factor: motivation, active learning...

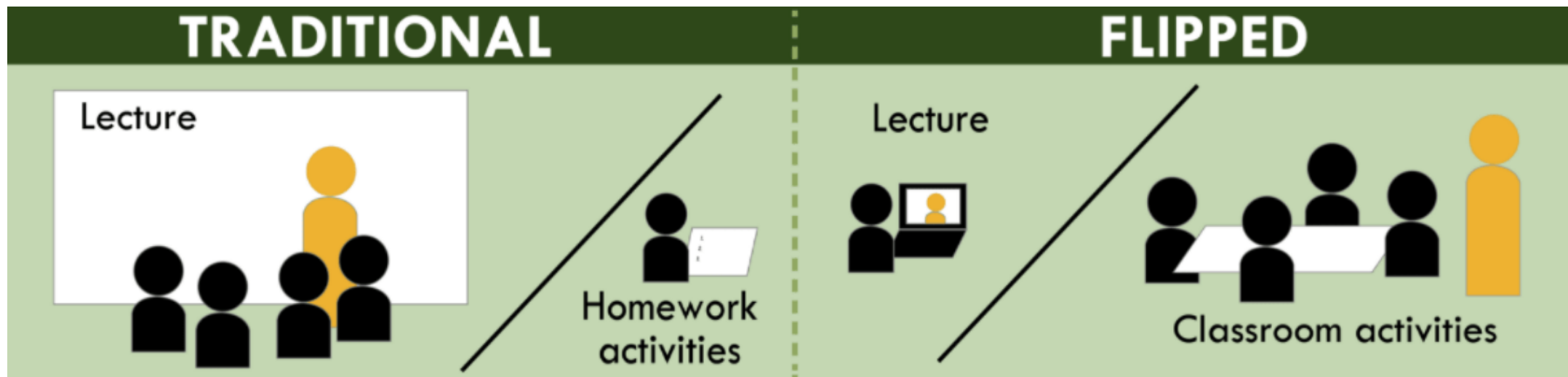
學生因素：使用動機、主動學習

How we can make use of new technology in our social work teaching and learning?

我們應如何善用新興技術於社會工作的教與學？

線上教學模式/電子學習模式 (eLearning pedagogies)

- **Flipped Classroom 翻轉課堂**: Moves direct-instruction lectures outside the classroom (usually via online videos) and reserves the in-class time for **higher-order student-centred learning activities**.
- **Blended learning 混合學習**: Integration of classroom face-to-face learning experiences with online learning experiences
 - Enhance Interaction
 - Reduced boredom
 - Active learning



翻轉課堂及混合學習模式(Flipped classroom approach and Blended learning)

- Active learning 深化討論
- Immediate Feedback 直接回應
- Consolidated knowledge 強化知識
- Enhanced Interaction 增加互動
- Differentiated support 支援空間
- Reduced boredom 減少沉悶
- Empowered efficiency 提升效能

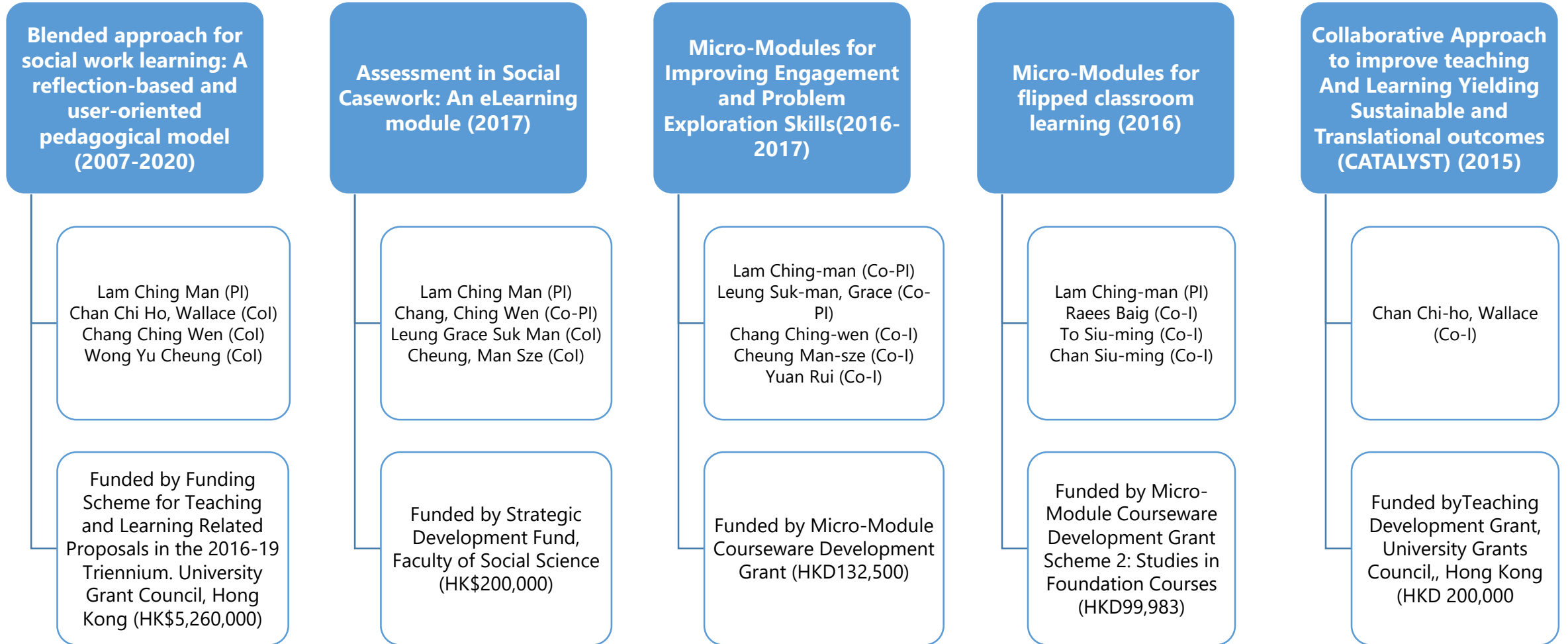
More time allocated for learning activities in the class means that students have more

Instructors are able to provide immediate

Instructors would find the course more

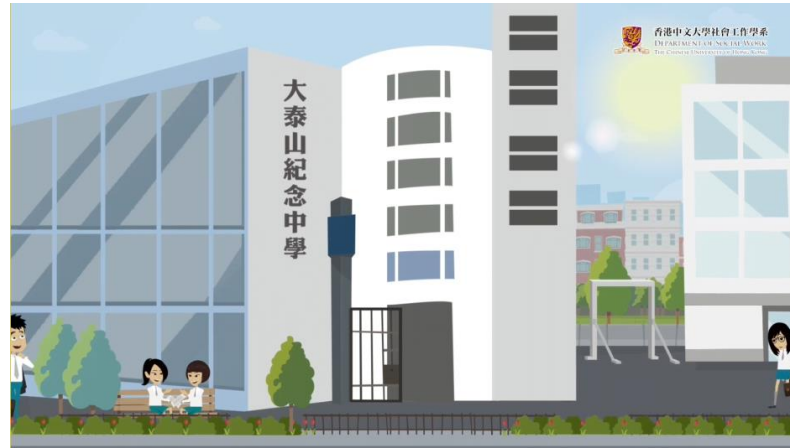
The flipped classroom should allow instructors to cover more materials as the lecture content is delivered asynchronously. Thus, teaching and learning are not limited by a finite number of face-to-face class hours.

研究計劃 (Research projects)



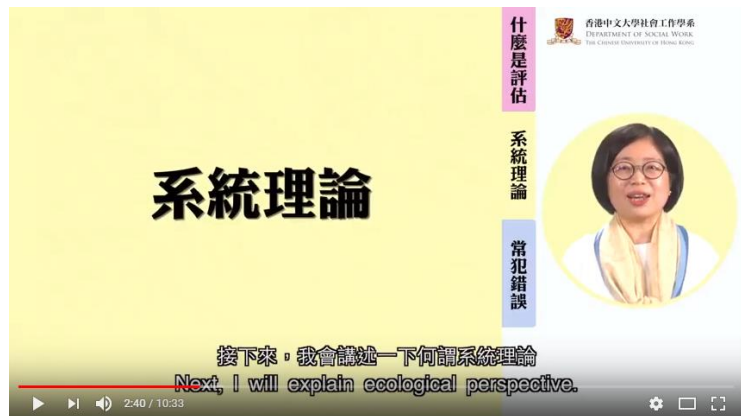
形式 (Format)

- Mini lecture 小型講學
- Multiple sources 綜合資訊
- Street interviews 街頭訪問
- Role play 角色扮演
- Project presentations 小組演講
- Video-taped lecture 錄影教學
- Animation 動畫



- **Project name: Assessment in Social Casework - An eLearning module**

- Students are required to watch **one mini lecture** to understanding basic knowledge and essential elements of case assessment **before the lecture**.
- A case presented in animated format is used for in-class discussion.



Mini lecture 小型講學



Case for discussion 個案討論



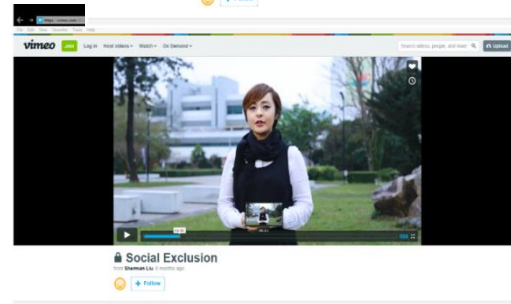
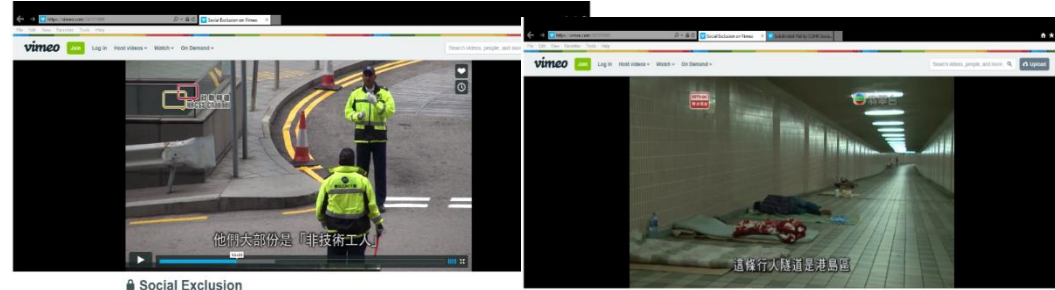
Discussion at interactive classroom
互動討論



Use uReply to conduct peer rating
即場投票

Video Format 視像素材

- Mini lecture 小型講學
- Multiple sources 綜合資訊
- Street interviews 街頭訪問
- Role play 角色扮演



跨院校合作研究計劃 (Joint-universities collaborative project funded by UGC)

Grant Scheme	Project Title	Amount	Deliverables
University Grant Council (UGC) Funding Scheme for Teaching and Learning	Blended approach for social work learning: A reflection-based and user-oriented pedagogical model 混合學習方式於社會工作的訓練: 反思和使用導向的教學模式	HK\$ 5,260,000	15 sets of e-Learning materials; 4 MOOCs; E-forum; 5 capacity building training workshops; 5 theme-based local seminars; 1 "Blended" International conference; 6-8 publications

- 五間教資會資助大學共同合作
- 香港中文大學為項目領隊



研究計劃成員 (Project Members)

香港中文大學

林靜雯教授 (項目負責人)

陳智豪教授

張瀟文教授

黃於唱教授

香港大學

香港城市大學

香港理工大學

香港浸會大學

吳兆文博士

周愛華博士

何敏儀博士

譚巧蓮博士

黎永亮教授

陳智達博士

黃秀娟博士

任剛先生

黃昌榮教授

陳德茂博士

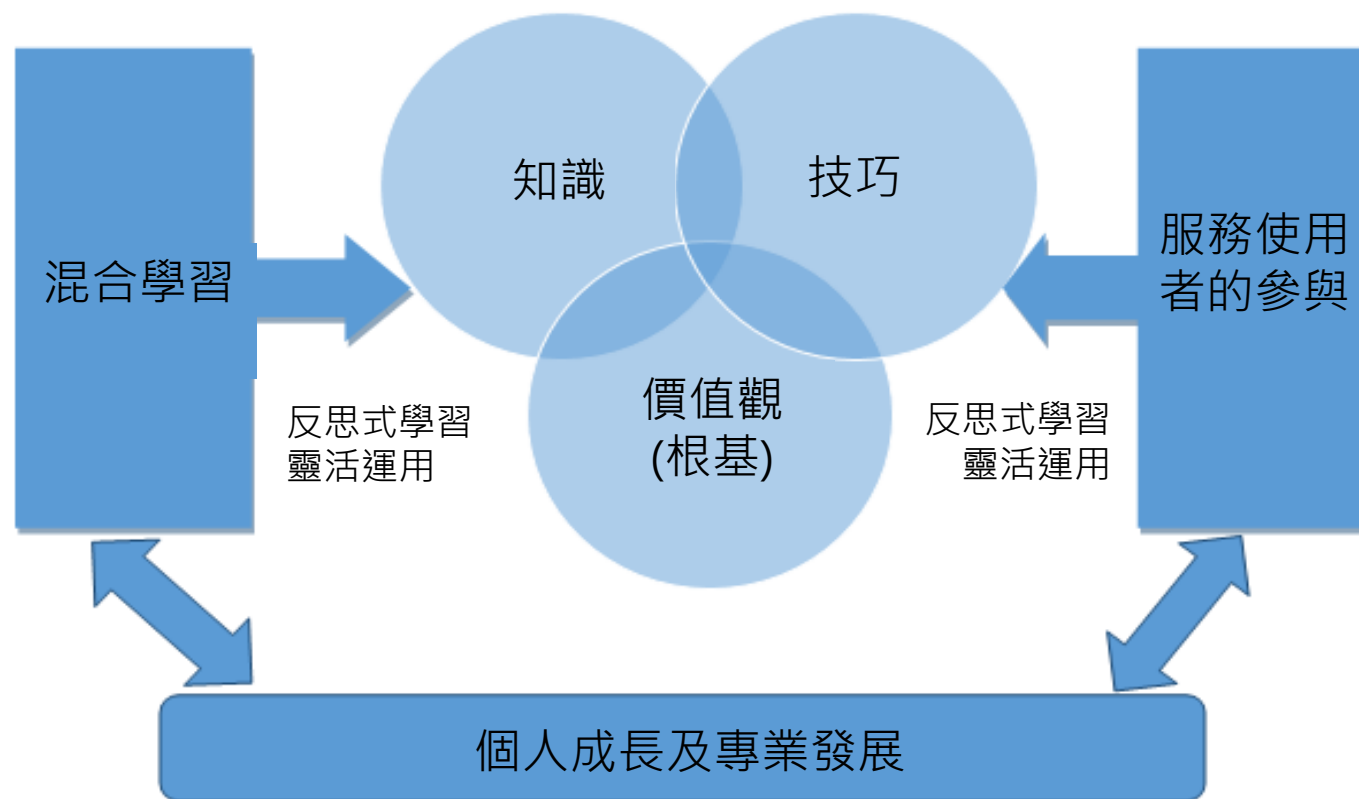
曹嫵妮博士

梁瑞敬博士

- 成員包括五間教資會資助大學、及16位教學人員



Diagram of the Project Design Framework



15 個網絡課程 (e-Learning Modules)



Social Welfare Administration
社會福利行政
Social Work with Old People
安老服務社會工作
Social Casework
社會個案工作



Preparatory Workshop for Fieldwork
實習預備工作坊
Social Work Practice with Groups
社會小組工作
Self-understanding and Communication Skills
自我理解及溝通技巧



Skills for Social Work Practice
社會工作實務技巧
Social Work with Families
家庭社會工作
Social Work with Youth
青少年社會工作



Human Behavior and the Social Environment II
人類行為與社會環境 II
Law and Social Administration
法律與社會行政
Social Work Research
社會工作研究



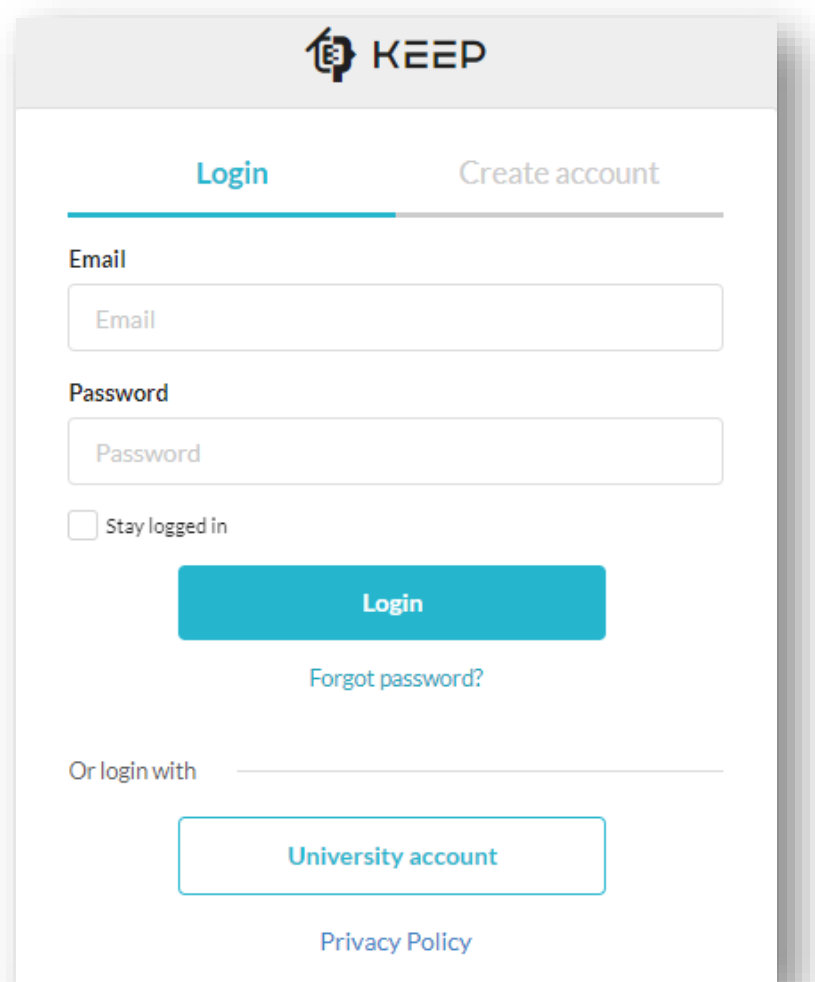
Human Behavior and the Social Environment
人類行為與社會環境
Community Work
社區工作
Social Policy
社會政策

• 將於2019年推出。

大規模開放網絡課程(Massive Open Online Course)

- Social Welfare Services in Hong Kong 香港社會福利服務
 - Introduction to Social Work 社會工作導論
 - Ageing and Social Work 高齡化與社會工作
 - Health and Wellness 促進全人健康
-
- 4 個大規模開放網絡課程將在2019年9 月開放予公眾免費修讀。

網絡論壇 (E-forum)



KEEP

Login Create account

Email

Email

Password

Password

Stay logged in

Login

Forgot password?

Or login with

University account

Privacy Policy

12/14/2018



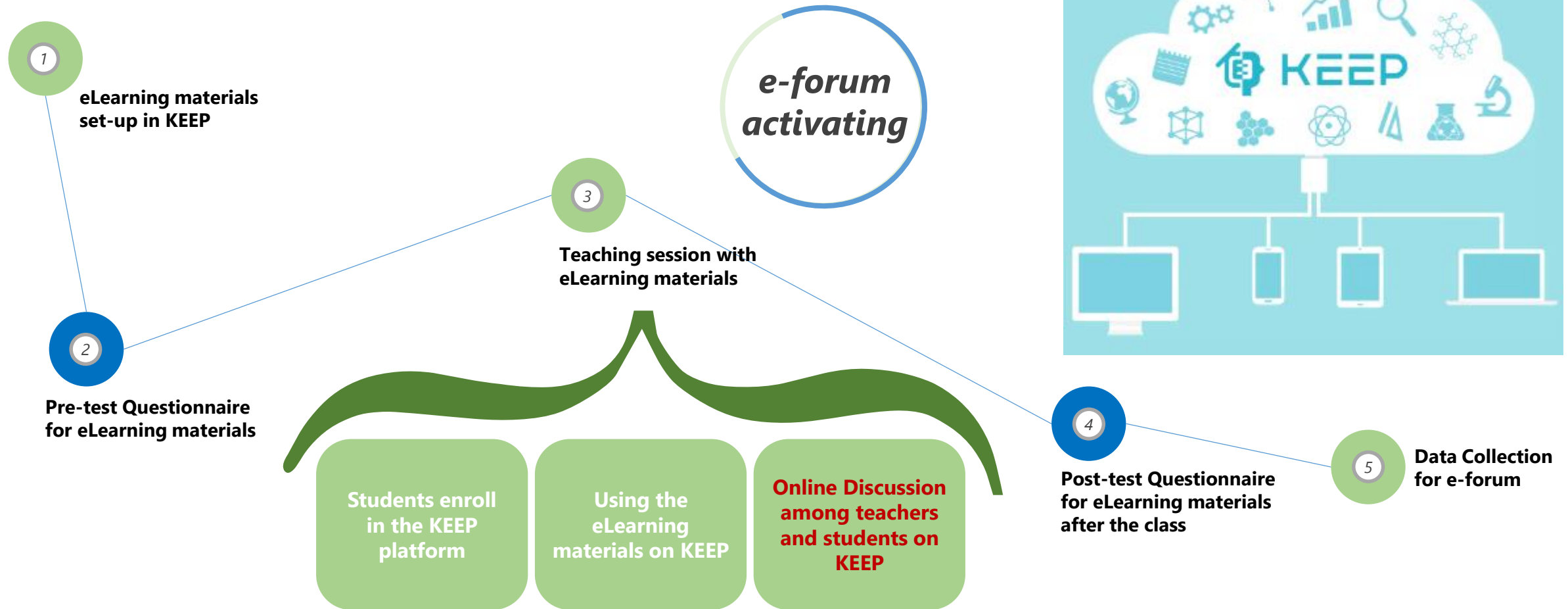
計劃將結合傳統的課堂學習和電子技術的平台，發展網絡論壇，期望帶動學生間經驗與想法的碰撞與交流，及反思社會工作的實踐。

網上教學平台KEEP 將用作跨院校老師及學生的交流平台，提供相關互動的數據以作分析，以便持續地優化現有教學內容。

CMLam/EdConferene

14

網絡論壇 (E-forum)



Students are required to enrol in a KEEP course to see the eLearning materials. This helps joint-u students can be grouped in the same platform. Then they can express their reflection and ideas on the discussion forum supported by KEEP.

Teachers would give response to their messages.

TECHNOLOGY VARIETIES IN BLENDED LEARNING



12/14/2018



CMLam/EdConferene

17

HUMAN LIBRARIES HUB



12/14/2018

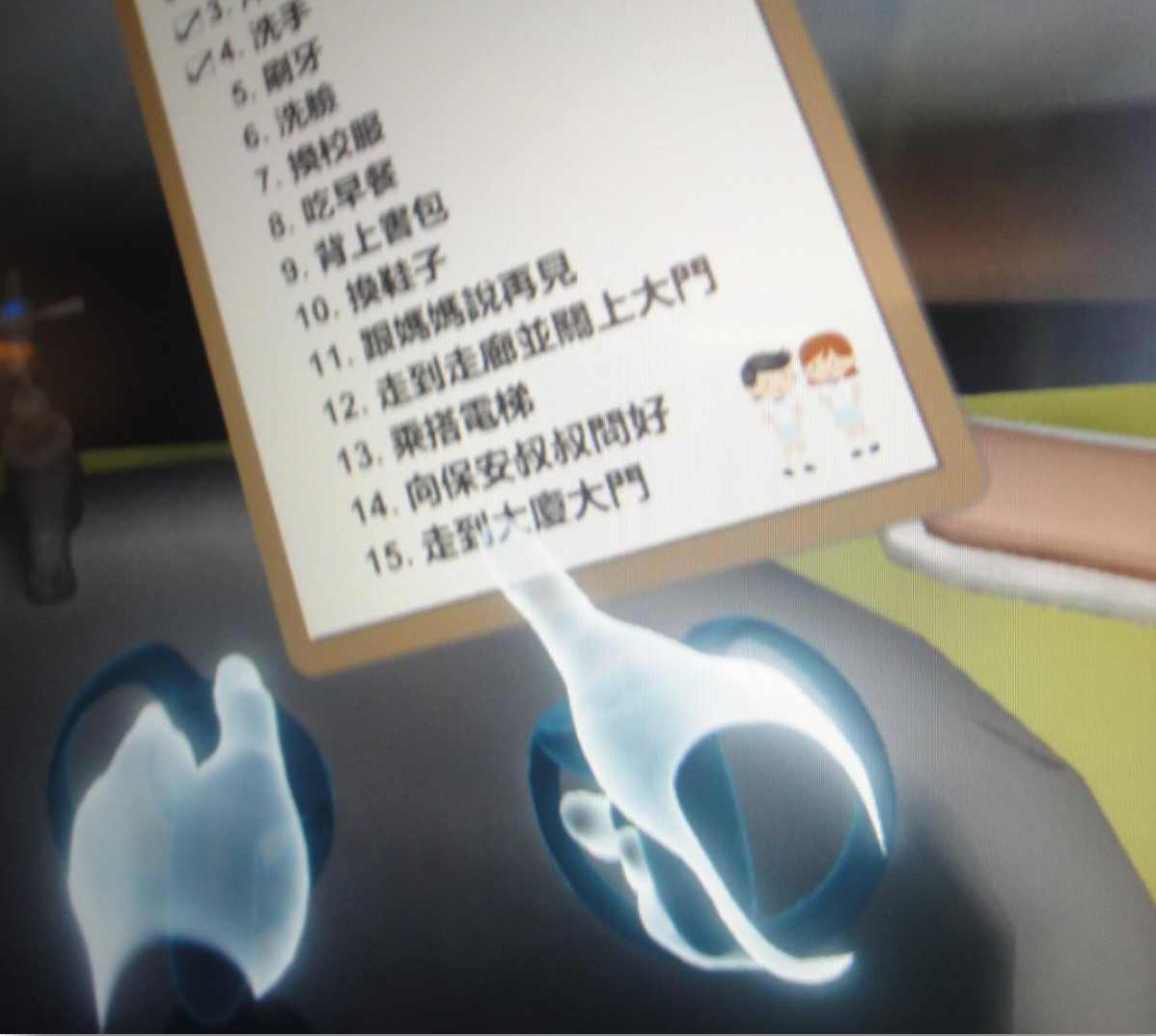


CMLam/EdConferene

18



“VR Dome”
a digital cultural, experimental space
with a 360° Dome-shaped Projection System



Social adaptive behavioural training to SEN students



Working with ethno-specific communities



Use of new technology in teaching

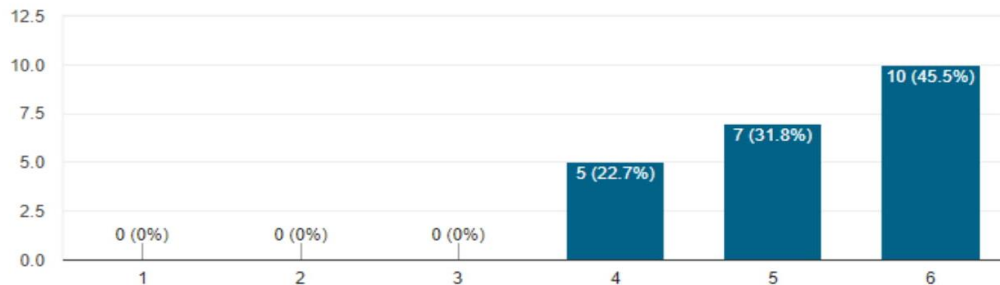


Use of new technology in social work

專題工作坊系列

1/ The workshop enhanced my capacity in developing blended learning.

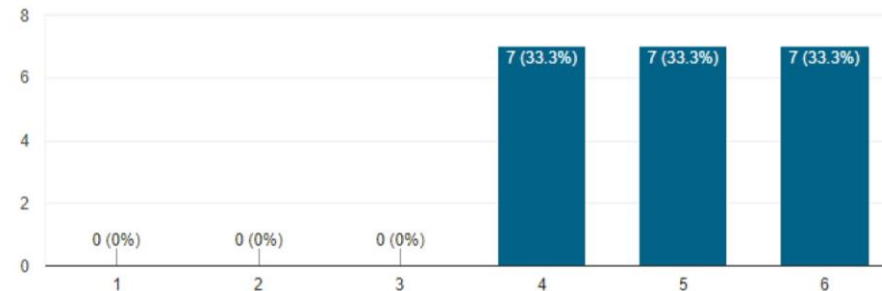
22 responses



Technology Varieties in Blended Learning

1/ The workshop enhanced my capacity in developing blended learning.

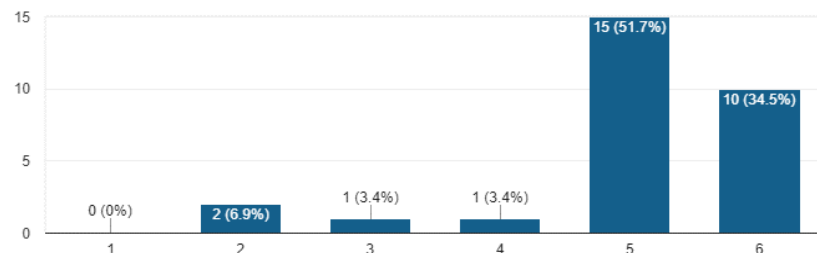
21 responses



Human Libraries hub

1/ The workshop enhanced my capacity in developing blended learning.

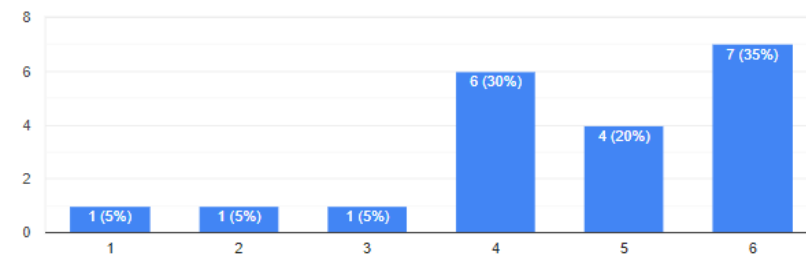
29 responses



Social Work Beyond the Imagination

1/ The workshop enhanced my capacity in developing blended learning.

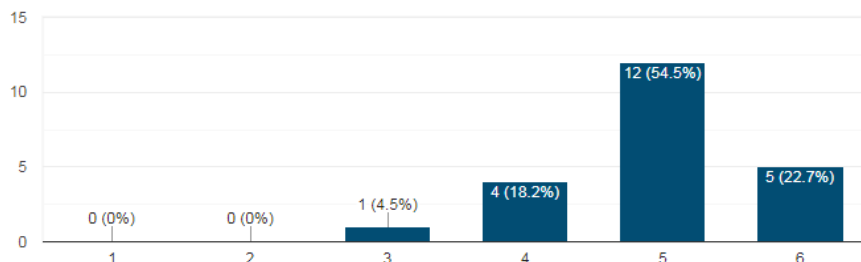
20 responses



Achieving a reflective teaching and learning experience in social work: Cases of FutureLearn and CV360

1/ The workshop enhanced my capacity in developing blended learning.

22 responses



VR Technology & its Application for e-learning in Social Work

特色總結

共同協作 成員涵蓋五間教資會資助大學的課程總監

教材共享 素材將不單提供予教資會大學，亦可予其他自資社會工作課程使用

專科設計 為社工課程度身制定

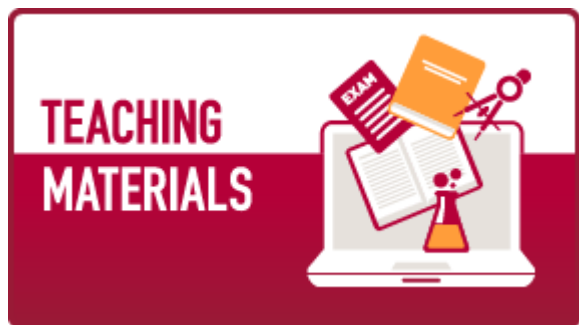
專業討論 教學法及教學模式的討論

能力培訓 裝備培訓老師

實証為本 收集相關評詁數據

經驗積累 電子學習是教學趨勢，善用而保留社會工作特色及切合教學需要，是必要的過程

持續探索 其他有益於學生的教學新發展？



教材運用
分享研討會



國際會議
2020年5月14日或21日
(暫定)

