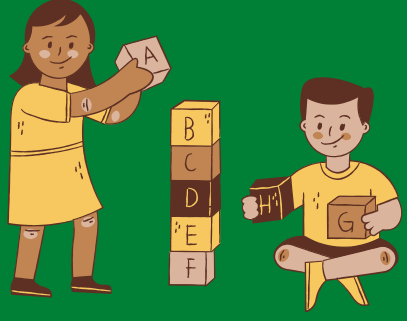


# GROUP PLAY USING CHILD-CENTERED PLAY THERAPY PRINCIPLES AND SKILLS

By Ms Lau Suet Ha, Lottie  
B.Soc.Sc. & M.Ed.



## About the Program

This program is a continuation of the series of training courses on Child-centered Play Therapy (CCPT) conducted by Ms Lottie Lau and organized by the Department of Social Work of CUHK.

Helping professionals conducting CCPT may sometimes need to **conduct the therapy in a group context**, placing more than one child in the process. Such a group therapy modality would be especially helpful when working on children's difficulties mainly related to socialization rather than personal ones (Axline, 1969; Ginott, 1961; Landreth, 2001). In group play therapy, therapists would need to acquire therapeutic responses facilitative of children's self-expressions not only on an individual level but in a relationship context as well. And, principles and skills behind these therapeutic responses, apart from being **socialization-enhancing for children**, could be **relationship-strengthening between parents and children** too. (Information provided by Lottie Lau.)

## Objectives

1. To widen CCPT practitioners' perspectives in using the therapy from an individual context to a group one.
2. To prepare participants to conduct child-centered group play therapy by equipping them with related concepts, principles, and skills.

## Content

A 21-hr training course, in which explorations and discussions will be made around:

1. Theoretical concepts of child-centered group play therapy, including its rationale, beliefs, and goals;
2. Practical issues around child-centered group play therapy, such as principles of case selection, considerations of group arrangements, and group dynamics to be observed; and
3. The use of CCPT principles, skills, and facilitative responses in a relationship context:
  - a. where more than one child is placed in the special play time.
  - b. where the parent is present in the child's special play time.

# GROUP PLAY USING CHILD-CENTERED PLAY THERAPY PRINCIPLES AND SKILLS

By Ms Lau Suet Ha, Lottie  
B.Soc.Sc. & M.Ed.

## Trainer

Ms Lau Suet Ha, Lottie is a pioneer who has introduced and cultivated the approach of Childcentered Play Therapy in Hong Kong since the early 1990s.

Ms LAU received her bachelor's degree in social work from the Chinese University of Hong Kong. She pursued her postgraduate counseling studies in The University of North Texas, where she specialized in learning Child-centered Play Therapy from Dr Garry Landreth, an internationally renowned scholar who developed the therapy based on Virginia Axline's nondirective approach.

Ms LAU has more than 25 years of clinical experience in counseling work. She has been particularly keen and well versed in steering psychological healing in emotionally disturbed children by means of Child-centered Play Therapy (CCPT). In the 1990s, in addition to her formal teaching in tertiary education, Ms LAU began to spread the concept of CCPT in Hong Kong by pioneering systematic training programs, of various levels, on the therapy. Over the years, Ms LAU has laid down the cornerstone of the therapy in the local scene, through hundreds of related training courses conducted with continual refinements. Accumulatively, over 10,000 participants, including around 4,950 helping professionals and 5,100 parents, have completed the basic level of play therapy training that she conducted. Throughout the years, Ms Lau has received numerous positive comments, and her courses have always been fully enrolled with enthusiastic recommendations from participants.

## Formats

Mini-lecture, Video demonstration,  
Case illustration, Exercise  
& Discussion



## Participants

Helping professionals who have satisfied the required attendance in the following training programs conducted by Ms Lottie Lau:

1. 5-day Basic Training on Child-centered Play Therapy, &
2. Practicum Course on Child-centered Play Therapy , or  
Supervised Child-centered Play Therapy Experience

## COURSE

Course Code : CE20210728  
Course Name : Group Play Using Child-centered Play Therapy Principles and Skills  
Date : Jul 28, Aug 4, 5, 2021  
Time : 9:00 am - 5:30 pm (21 hours)  
Venue : The Chinese University of Hong Kong  
Language : Cantonese (supplemented with English)  
Class Size : 40 participants  
Course Fee : HK\$4,410

CPE Points for  
Registered  
Social Workers: 21

### Discount Scheme (on or before May 25, 2021)

- **10%** (HK\$3,970) discount for Early Bird Registration
- **20%** (HK\$3,530) discount for CUHK Department of Social Work's members (Current staff, current students, SWK Alumni Association members, or CPE members)

**[20% discount is applicable by POST only]**

**Application Deadline: July 13, 2021**

### Application Methods

1. Send the following **application form with a crossed cheque payable to 'The Chinese University of Hong Kong'** to CPE, Department of Social Work, CUHK, Shatin, N.T. Hong Kong.

**OR**

2. Register the course online via our website:  
<https://web.swk.cuhk.edu.hk/en-gb/continuing-professional-education/programmes-information>

### Group Play Using Child-centered Play Therapy Principles and Skills

The Application will start at 14:30 on 15 April 2021