

# Child-centred Play Therapy Intensive Training

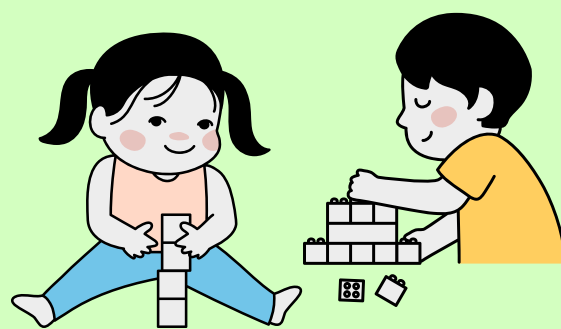
## Description

Child-Centered Play Therapy (CCPT) is a nondirective play therapy approach for children who have emotional and behavioral difficulties. The efficacy of CCPT for children has been well established by research over many years. This training also serves as a foundation for preparing practitioners in understanding and applying Filial Therapy to work with parents.

## Learning Objectives

Participants will be able to

- Describe in practical terms what is meant by each of Axline's 8 principles of CCPT
- Compare and contrast the methods of nondirective play therapy with more directive approaches
- Describe CCPT according to Guerney's model
- Conduct the 4 primary skills of CCPT
- Handle a wide range of possible situations in play sessions
- Involve parents in meaningful ways in the play therapy process
- Immediately and confidently use CCPT in their work with children
- Discuss the six levels of interpretation and which are appropriate or inappropriate during CCPT sessions
- Describe the phases commonly observed as a child moves through issues in CCPT
- Explain how CCPT can be conducted in conjunction with other forms of play and family therapy



## Trainer's Biography

**Siu Fung Ying, Angela**

**BSocSc, DCS, MPhil, PhD**

**RCP (HKPS), CPsyAssoc (CPO), CTT/T, CPT-S, RPT-S**

Angela Siu is a Registered Clinical Psychologist under the Hong Kong Psychological Society and a Psychological Associate in the College of Psychologists of Ontario. She is also a Play Therapist / Supervisor under the Association for Play Therapy in the States and in Canada. She specializes in strengthening family relationships through play and has extensive training and experience in using various approaches to work with children and families. Angela has served in a variety of clinical and social service settings. She is currently working as an Associate Professor in CUHK.

## Format

Format includes brief lectures, live and videotaped demonstrations, case studies and supervision/feedback to participants as they practice during role play. The training is conducted in a playful, positive learning atmosphere. Participants will develop considerable competence in the conduct of CCPT through this very effective and individualized training approach.

## Target Participants

This training program is designed for social workers, counselors, play therapists, psychiatrists and psychologists who work with children and families. It provides practitioners with the knowledge and skills needed to conduct Child-Centered (Nondirective) Play Therapy effectively.

\*Proof of qualification may be requested for verification during enrolment process

## Continuing Education

24 contact hours on play therapy training recognized by the Association for Play Therapy.

(APT approved provider number: 13- 355)


CPD Points for Registered Social Worker: 24

*Becoming a Registered Play Therapist (RPT) under the Association of Play Therapy (APT), one should have 150 hours of play therapy specific instruction from APT approved providers (limit 50 non-contact hour). For details, please visit <https://www.a4pt.org>. There are other requirements for becoming a RPT, please visit APT website for details.*


Course Code CE20220725  
Course Name Child-centered Play Therapy Intensive Training  
Dates July 25, 26, 27, 28, 2022 (Mon - Thur)  
Time 9:30 am - 5:00 pm  
Venue The Chinese University of Hong Kong  
Language Cantonese (Supplemented with English)  
Class Size 40 participants  
Course Fee HK\$ 5,040  
Application Deadline July 8, 2022

**Discount Scheme (on or before June 15, 2022)**  
**10%** (HK\$4,540) discount for Early Bird Registration  
**20%** (HK\$4,040) discount for CUHK Department of Social Work's members (Current staff, current students, SWK Alumni Association members, or CPE members)  
**[20% discount is applicable by POST only]**

### Application Methods



Register via our website:  
<https://web.swk.cuhk.edu.hk/en-gb/continuing-professional-education/programmes-information>



Send the following application form with a crossed cheque payable to 'The Chinese University of Hong Kong' to CPE, Department of Social Work, CUHK, Shatin, N.T. Hong Kong

Application will open at 11:30am on June 6, 2022