

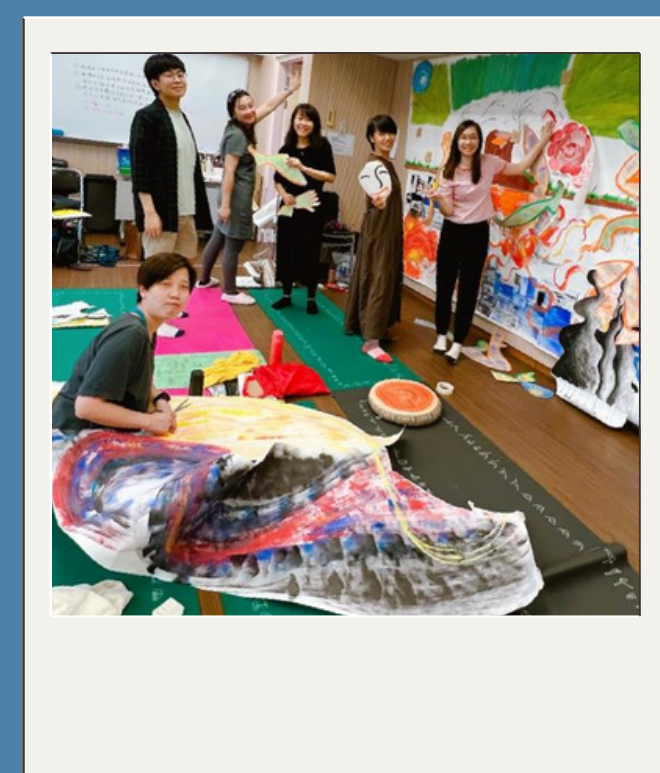
Person-centered EXPRESSIVE ARTS



Creative Connection for Group Transformation

Description

Arts-based group work is one of the major approaches in expressive arts therapy, psychotherapy, and group facilitation. Different art modalities are widely used in groups by counselors, social workers, creative arts therapists, and psychologists. Arts are effective means to warm up, make initial contact, foster communication, enhance cohesion, establish a therapeutic environment for growth, and improve whole person wellbeing.



In this course, emphasis is put on the practice of PCEA in groups. Theories on stages of group development, arts-based group practice, and therapeutic elements of PCEA groups are highlighted. Creative Connection for group transformation is taught via collaborative arts, live group facilitation, and small group triads. Collective resonance and communal understanding of the creative connection in the group process are practiced. Readings, literature review, videos of PCEA group sessions, discussions, and a paper ground the experience in theory and concepts. Applications of PCEA in the local context and cultural consideration are studied.

Format

Experiential activities, facilitation demonstration, experience sharing and group discussion



Target Participants

- Participants who have attended 'Approaches of EXAT, Ethical and Cultural Applications'



Becoming a Registered Expressive Arts Therapist (REAT) / Registered Expressive Arts Consultant/Educator (REACE) under the International Expressive Arts Therapy Association (IEATA), one should have specific hours of expressive art education and training. For details, please visit ieata.org. There are other requirements for becoming a REAT / REACE, please visit IEATA website for details.

Person-centered EXPRESSIVE ARTS



Creative Connection for Group Transformation

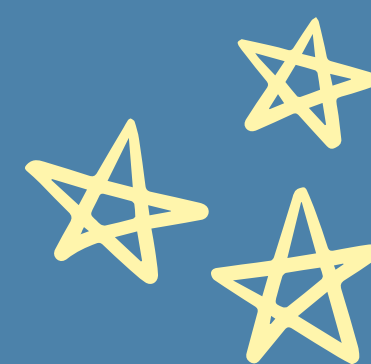
Trainer's Biography

Fiona Chang, Ph.D., (CUHK), M. Soc. Sc. (Family Therapy and Healthcare, HKU), REAT, RSW, Certified Supervisor (ACA), is a PCEA full faculty, a Registered Social Worker and a Registered Expressive Arts Therapist with the International Expressive Arts Therapy Association (IEATA). She founded the Three-Year Expressive Arts Therapy Program in Person-Centered Approach at the Centre on Behavioral Health of The University of Hong Kong (HKU) in 2011. She is currently the Vice-chairperson of "Art in Hospital", the Founding President of the Expressive Arts Therapy Association of Hong Kong (EATA HK), a part-time lecturer of the social work departments of HKU and The Chinese University of Hong Kong (CUHK). She is the advisor of the "Art Therapy Without Borders" and the South Western College in Santa Fe. She was the former Executive Co-chair of IEATA. She received the H.K. International Cancer Congress Young Investigators' Award, Outstanding Staff Award of Hospital Authority, Distinguished Social Work Alumni of HKU and the Shining Star Award of IEATA.



Terri Goslin-Jones, Ph.D., REACE, serves as Psychology/Creativity Studies faculty at Saybrook University in the U.S. She is a Registered Expressive Arts Consultant/Educator (REACE) and serve as an International Expressive Arts Therapy Association board member. Terri teaches courses in Person-Centered Expressive Arts, Creativity, Poetry, Personal Mythology and Humanistic Psychology. She supervises doctoral students in research using expressive arts and art-based inquiry. Terri has a passion for exploring humanistic and transpersonal psychology, world religions, and multi-cultural worldviews.

Person-centered EXPRESSIVE ARTS



Creative Connection for Group Transformation

Trainer's Biography



Shoshana Simons, PhD, RDT is Professor and former Program Chair of CIIS's MA in Counseling Psychology, Expressive Arts Concentration. She is a drama therapist, voice actor and arts-based coach & consultant with Key of Life Academy. She is also adjunct faculty at the Northwest Creative & Expressive Arts Institute, Seattle, WA, offering a Certificate in NarrARTive Expressive Arts in Coaching. Shoshana has 35+ years of experience in community-building in many settings including with children and adults in the fields of play, education, antiracism, counseling psychology, organizational development, and community work.

Ng Pui-wah, Meko, REAT, RSW, MSSc (CUHK), is a registered social worker and registered expressive arts therapist with the IEATA. She is now an acting supervisor of a crisis intervention centre, working with survivors of sexual violence, domestic violence and elder abuse. She is a part-time teaching assistant in a master course at the Department of Social Work of CUHK. She has been working with people with trauma and mental health challenge for over 14 years. She was the former Co-chair of the EATA HK and the former Regional Co-ordinator of IEATA. She conducts professional trainings for both local and overseas organizations.



Course Code CE20231024
Course Name Creative Connection for Group Transformation
Date Oct 24 - 27, 2023 (Tuesday to Friday)
Time 9:00 am - 6:00 pm
Venue The Chinese University of Hong Kong*
Language Cantonese & English
Class Size 24 participants
Course Fee HK\$ 7,280 (Non-refundable discount scheme)
Application Deadline Sep 24, 2023



*Depending on actual operational need, training may adopt face-to-face or online teaching, or both.

Application Methods



Register via our website:
<https://web.swk.cuhk.edu.hk/en-gb/continuing-professional-education/programmes-information>



Send the following application form to CPE, Department of Social Work, CUHK, Shatin, N.T. Hong Kong with a crossed cheque payable to *The Chinese University of Hong Kong*

CPD Points for
Registered
Social Workers: 32

Creative Connection for
Group Transformation

Application Form

CE20231024

Full Name (English) ☐ Mr
☐ Ms

(中文)

Name of Organization:

Position:

Field:

Phone No.:

E-mail:

Academic Training Background:

Highest Educational Level obtained:

Prerequisite (Please attach a copy of the attendance certificate from course)

Approaches of EXAT, Ethical and Cultural Applications

Date (mm/yy):

Course code:

Payment Information

Cheque No.:

Bank name :

Amount (HK\$): ☐ \$7,280



I acknowledge that I have read and agree to the Terms and Conditions.

Important Terms and Conditions

1. Application will be accepted on a first-come-first-served basis.
2. Email notification on application status will be sent to you only when application and payment have been received by the Division of Continuing Professional Education (CPE). It is suggested to first try checking your junk or spam email folders for the missing emails. If they are not there, please contact us if you do not receive any notification after 7 working days.
3. Application is regarded as successful only after a confirmation email is issued to you.
4. Cancellation of course will be announced via email at least one week before the commencement of the course. No separate notification will be issued by post.
5. Course fee is non-refundable or non-transferable to another course once application is confirmed.
6. Receipt of course fee will be issued on the first day of the course and payment method will be indicated on the receipt.
7. All course training materials, including but not limited to lecture notes, worksheets, PowerPoint slides, and demonstration videotapes, are pre-pared by the trainer of the course and are the property of the trainer. No reproduction of any pieces of these training materials is allowed without the permission of the trainer and CPE.
8. No form of recording, including audio- or video-recording, during the course is allowed without prior permission by the trainer and CPE.
9. Certificate of Attendance will be given to participants who have attained at least 90% attendance of the course.
10. If Storm Warning Signal No. 8 or above, or Black Rainstorm Warning Signal or the announcement of “extreme condition” by the Government after super typhoons is hoisted by 7am, class will be cancelled. Details of postponement or other arrangements will be announced by email afterwards.
11. Personal data provided on course application form are used only for course application, course administration and future promotion purposes. All personal data collected will be treated with strict confidentiality. Under the provision of the Personal Data (Privacy) Ordinance, applicants have the right to request access to and make correction of their personal data. Applicants wishing to make amendments on personal data should submit a written request to CPE by email to swkcpe@cuhk.edu.hk.
12. The right of interpretation and amendment of the above terms belong to CPE.



3943 1704



swkcpe@cuhk.edu.hk



<http://www.cuhk.edu.hk/swk>